



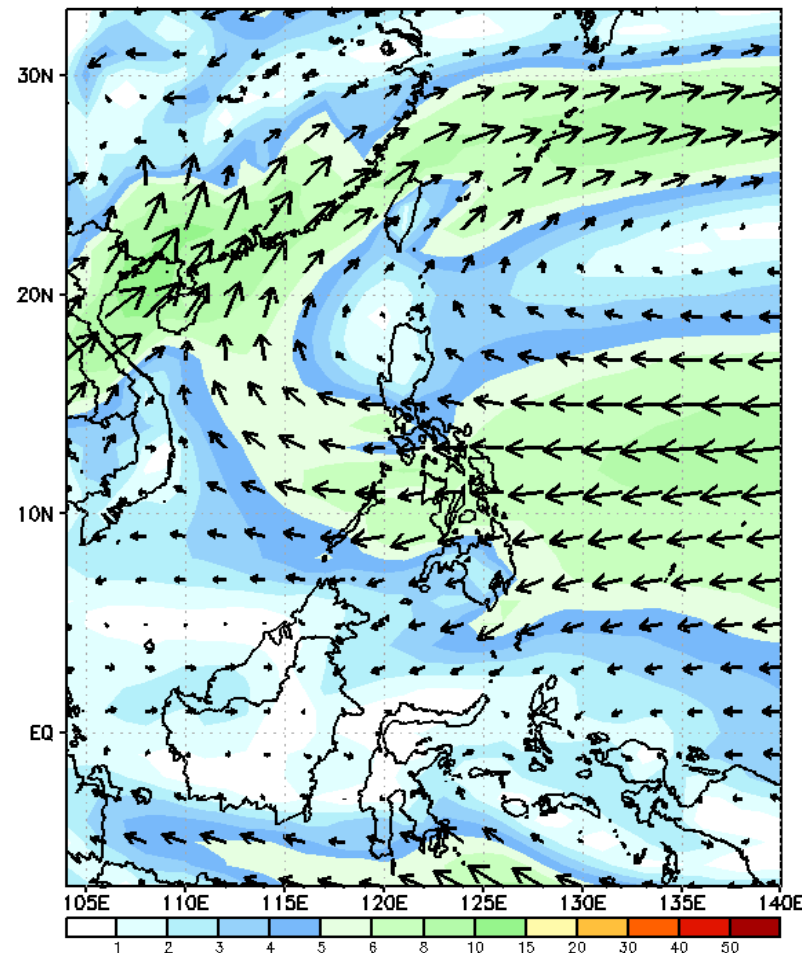
# Week 1 & Week 2 Forecast for the Philippines using GEFS Model



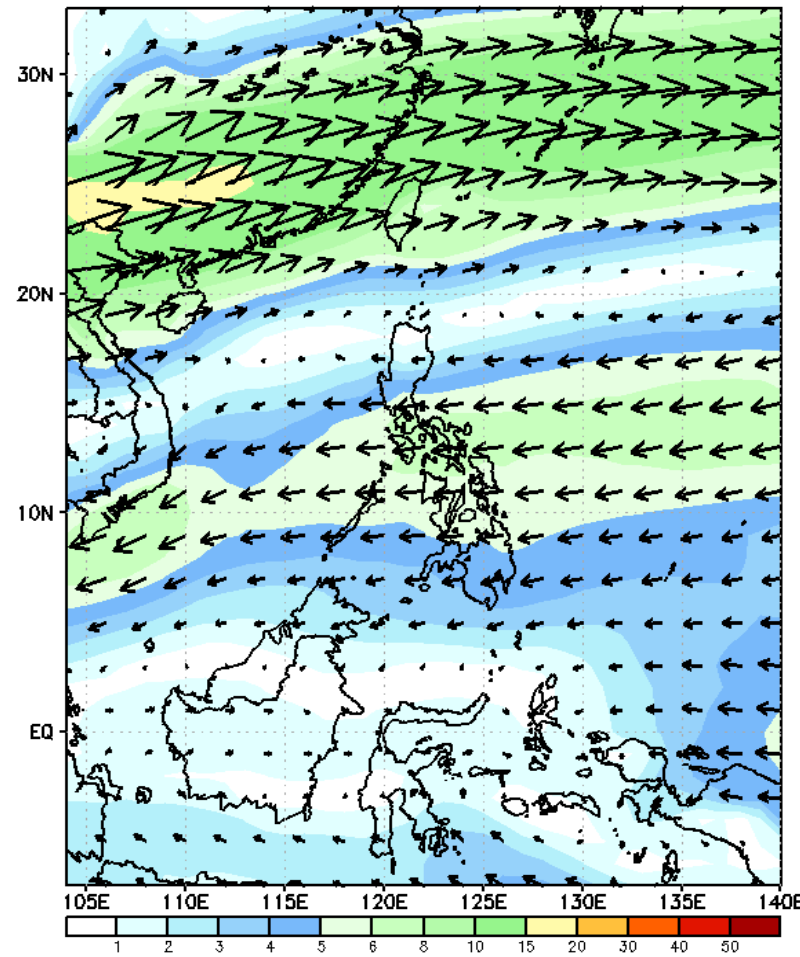
# GEFS Week-1 Wind Forecasts:

Week 1: April 29- May 05, 2024

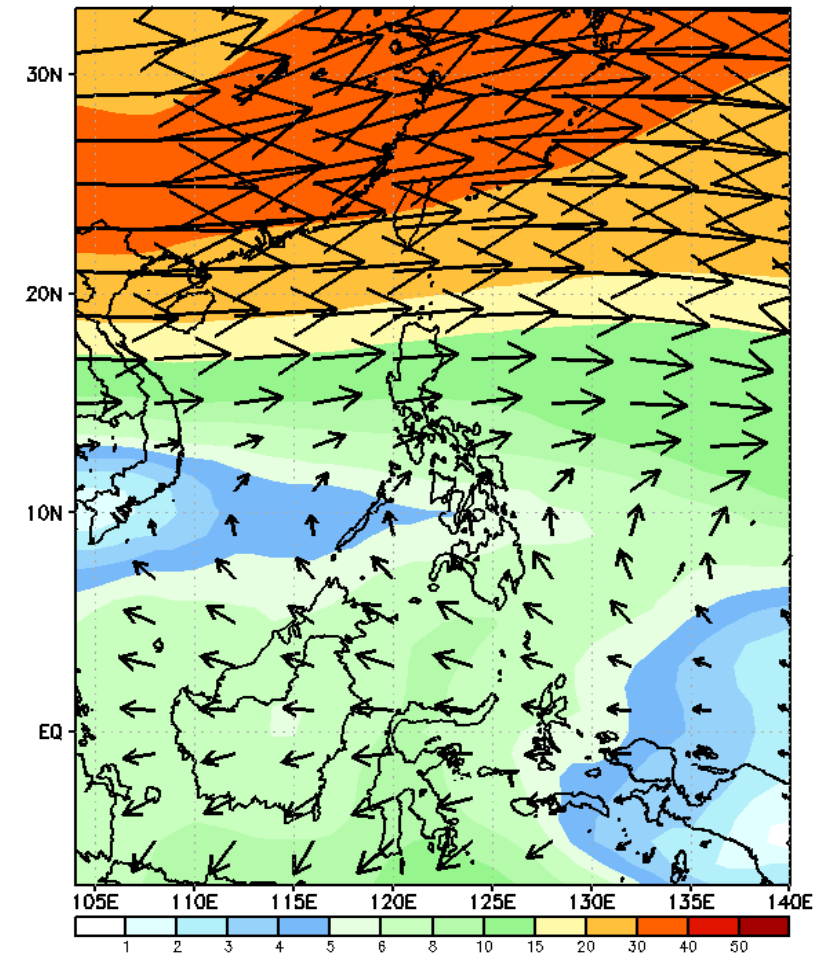
GEFS Week-1 850-hPa Wind Total  
Valid: 20240429 - 20240505



GEFS Week-1 700-hPa Wind Total  
Valid: 20240429 - 20240505

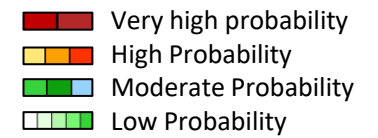


GEFS Week-1 200-hPa Wind Total  
Valid: 20240429 - 20240505



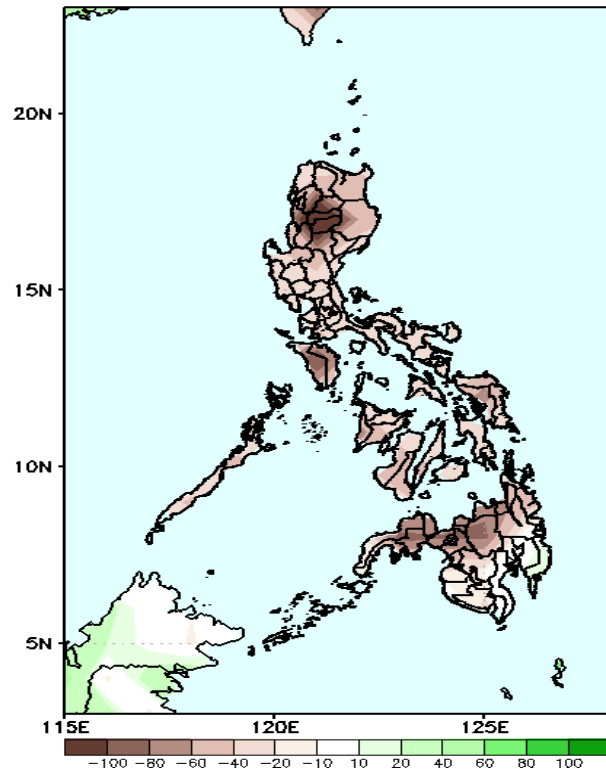
Easterlies continuously affect most parts of the country. Expect dry and warm days during the forecast period.

# Precipitation Anomaly and Exceedance Probability > 25/50 mm



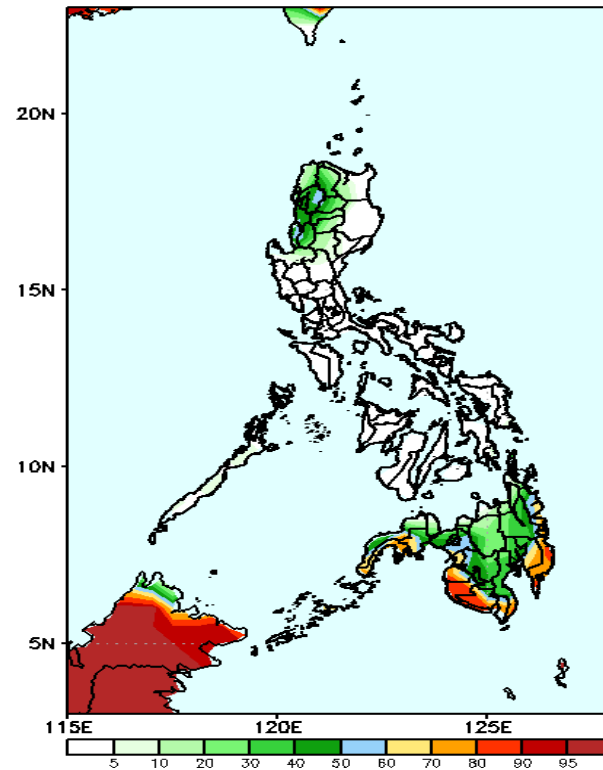
Week 1: April 29- May 05, 2024

GEFS Week-1 Precip. Anomaly  
Valid: 20240429 - 20240505



Rainfall deficit of 40-100mm is expected in CAR;  
40-80mm in most parts of the country

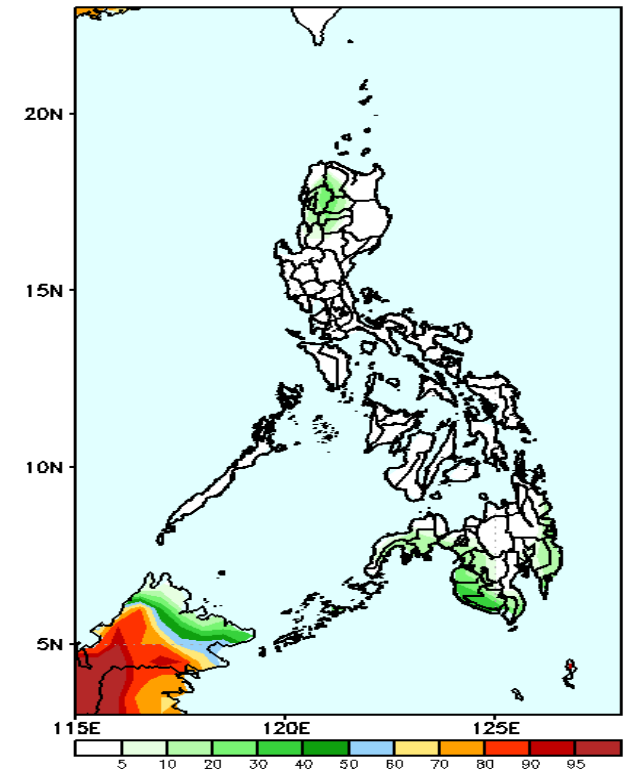
GEFS Week-1 Exceedance Prob. > 25mm  
Valid: 20240429 - 20240505



### Probability to Exceed 25mm

- Moderate to high over most of Mindanao;
- Low to moderate over CAR, and La Union;
- Low over the rest of the country.

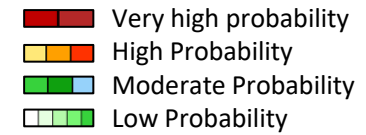
GEFS Week-1 Exceedance Prob. > 50mm  
Valid: 20240429 - 20240505



### Probability to Exceed 50mm

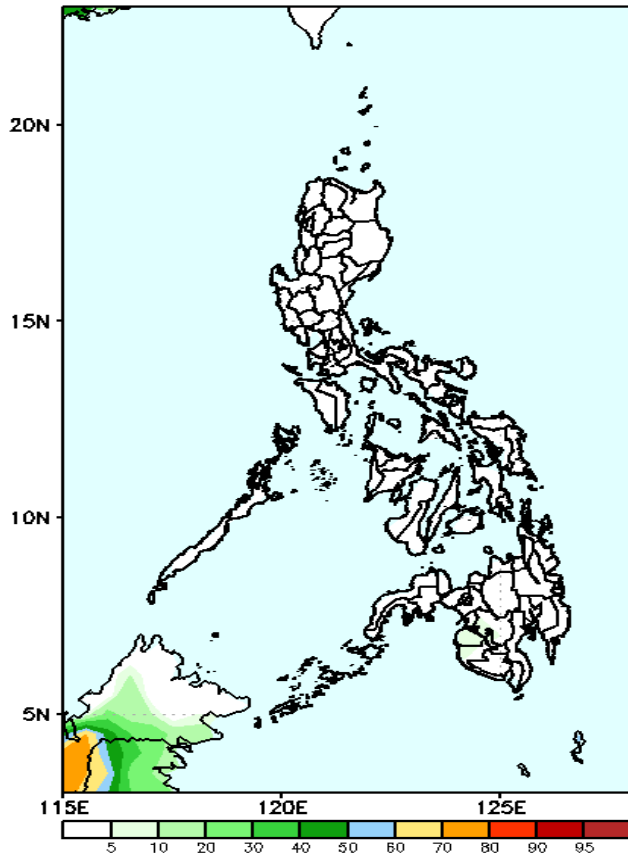
- Low to moderate over Mindanao;
- Low over Luzon and Visayas.

# Exceedance Probability > 100/150/200 mm



## Week 1: April 29- May 05, 2024

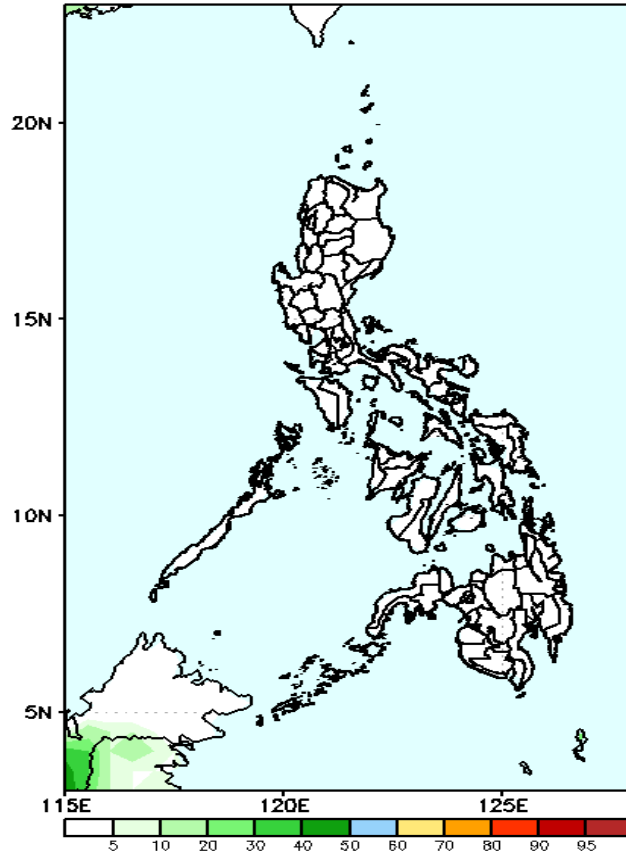
GEFS Week-1 Exceedance Prob. > 100mm  
Valid: 20240429 - 20240505



### Probability to Exceed 100mm

- Low across the country.

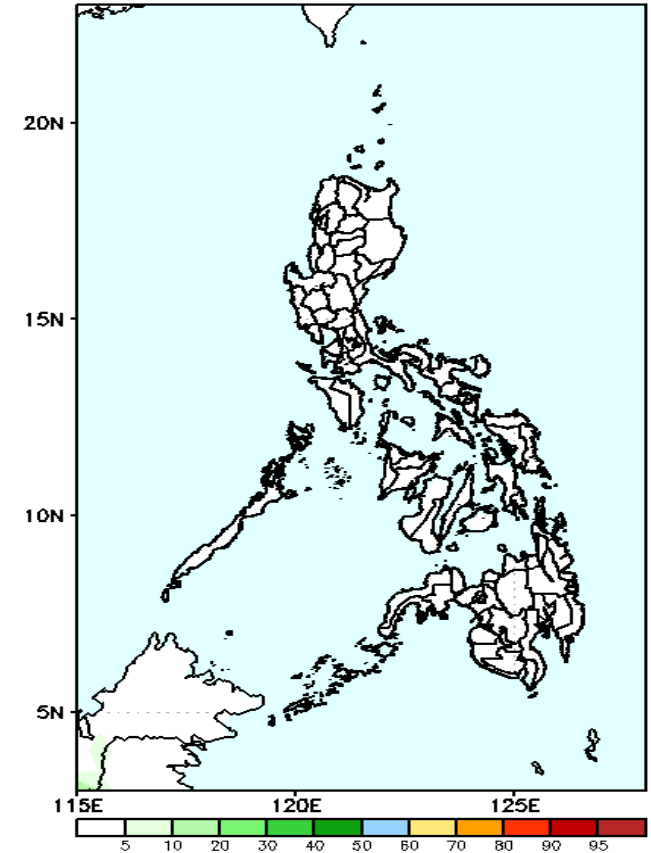
GEFS Week-1 Exceedance Prob. > 150mm  
Valid: 20240429 - 20240505



### Probability to Exceed 150mm

- Low across the country.

GEFS Week-1 Exceedance Prob. > 200mm  
Valid: 20240429 - 20240505



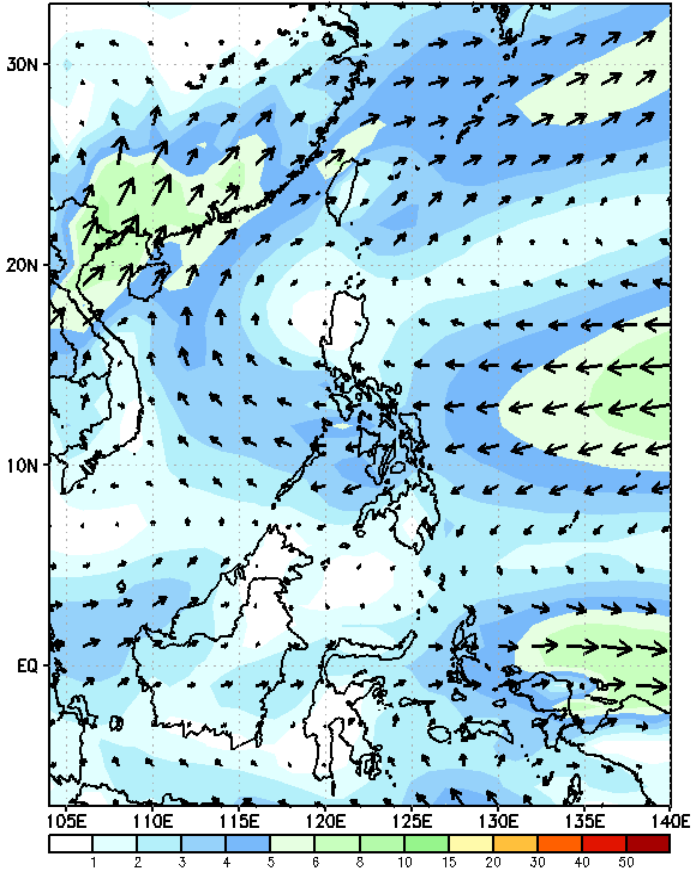
### Probability to Exceed 200mm

- Low across the country.

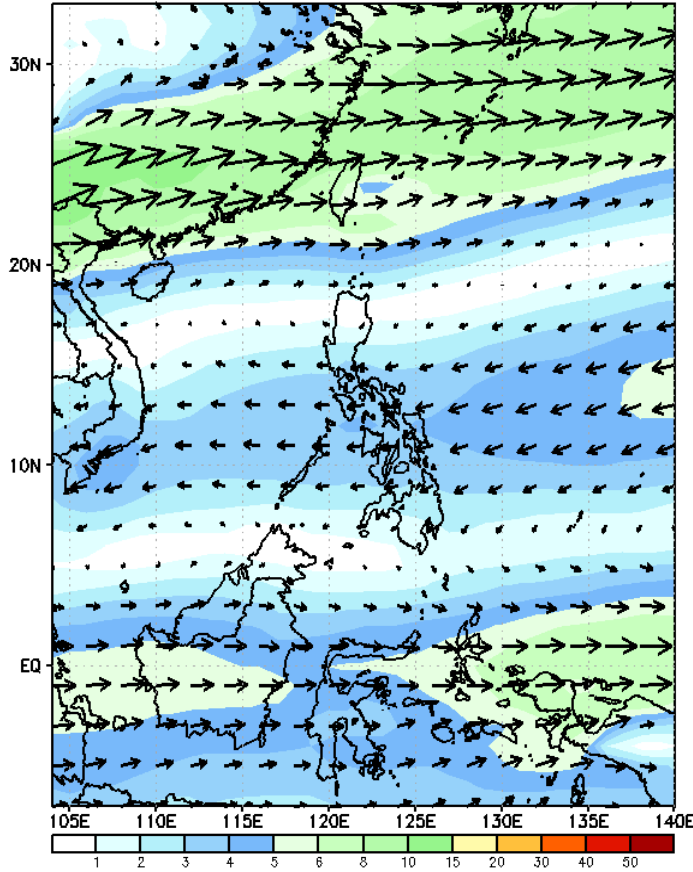
# GEFS Week-2 Wind Forecasts:

Week 2: May 06-12, 2024

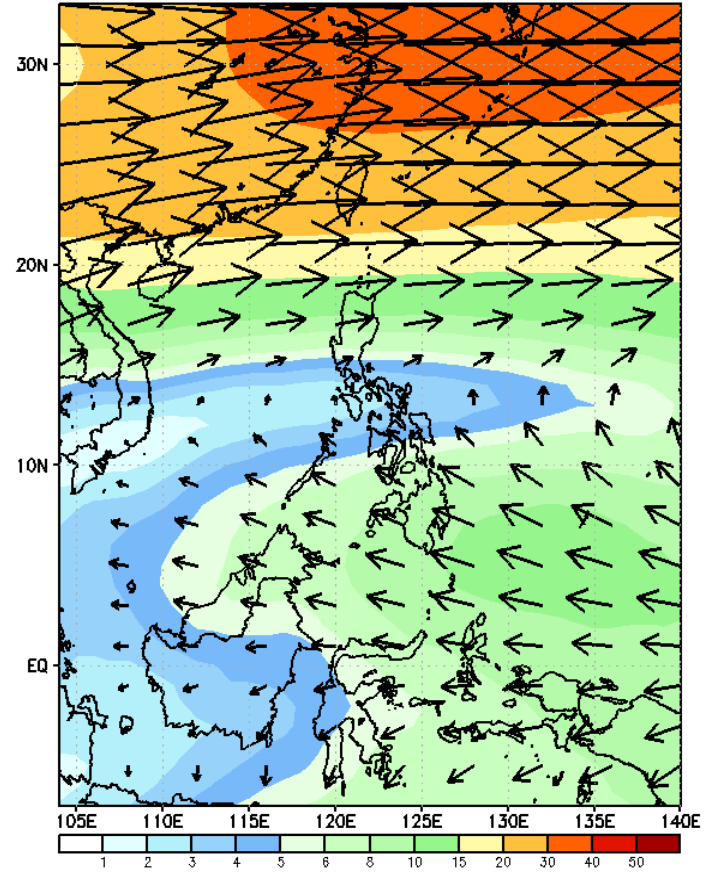
GEFS Week-2 850-hPa Wind Total  
Valid: 20240506 - 20240512



GEFS Week-2 700-hPa Wind Total  
Valid: 20240506 - 20240512

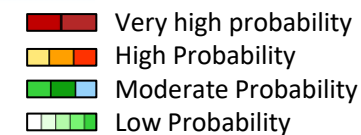


GEFS Week-2 200-hPa Wind Total  
Valid: 20240506 - 20240512



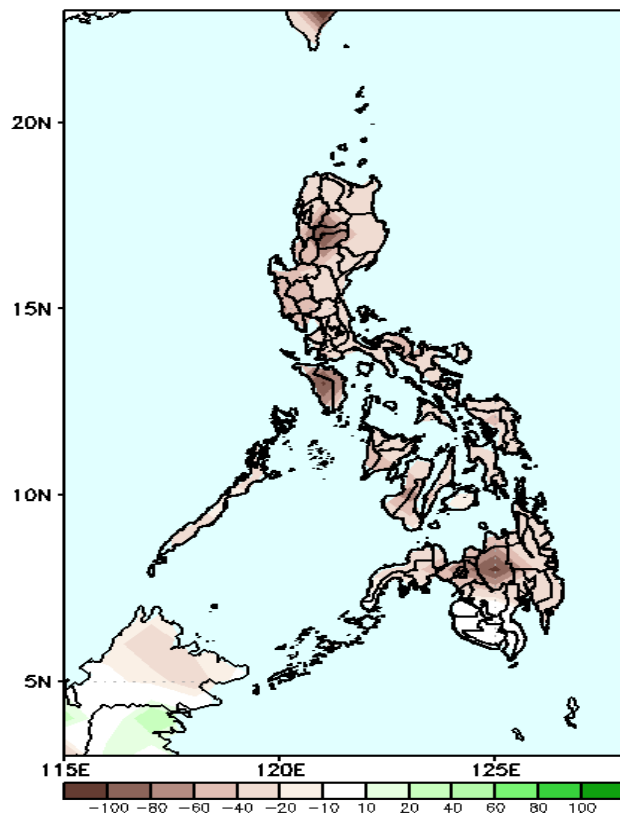
Easterlies will likely prevail in most parts of the country. Expect dry and warm days during the forecast period.

# Precipitation Anomaly and Exceedance Probability > 25/50 mm



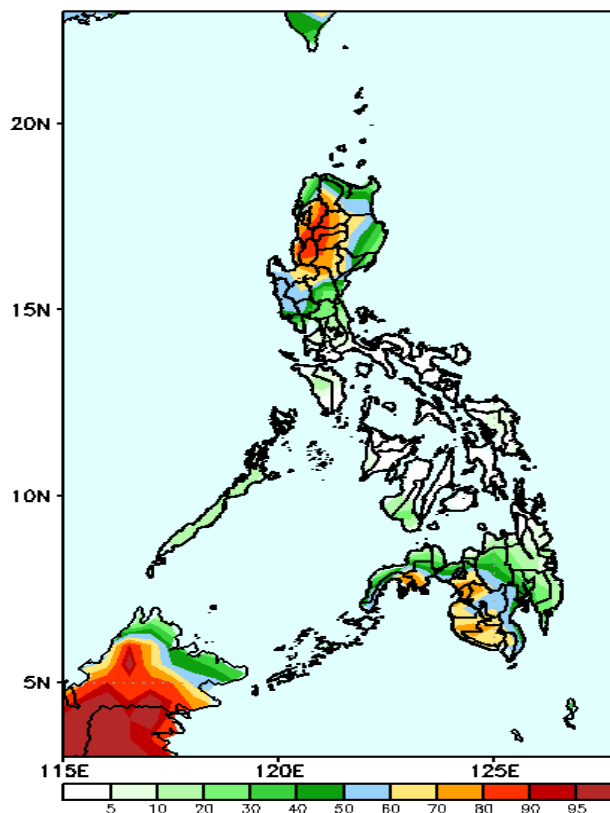
Week 2: May 06-12, 2024

GEFS Week-2 Precip Anomaly  
Valid: 20240506 - 20240512



Rainfall deficit of 20-80mm is expected in most parts of the country.

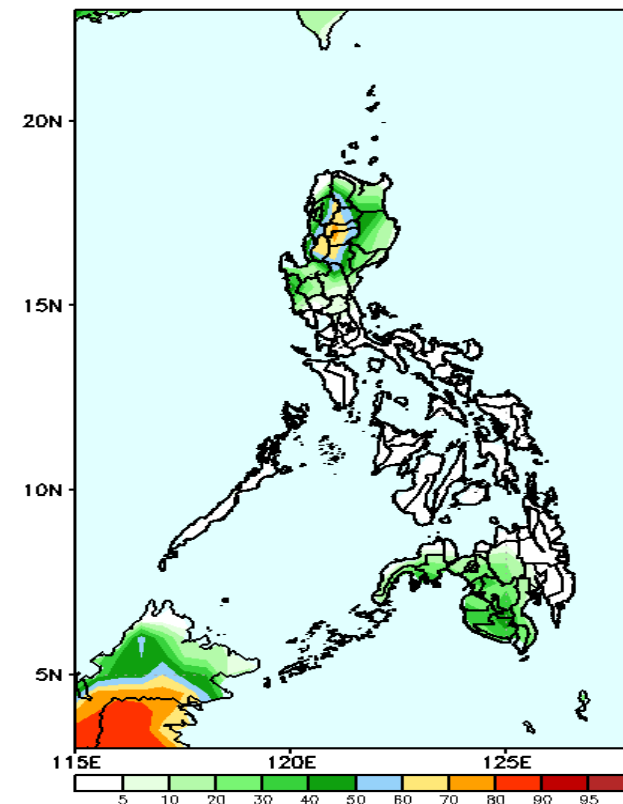
GEFS Week-2 Exceedance Prob. > 25mm  
Valid: 20240506 - 20240512



## Probability to Exceed 25mm

- Moderate to high over CAR, Ilocos Region, western side of Cagayan Valley, and the western portion of Mindanao;
- Low over the rest of the country.

GEFS Week-2 Exceedance Prob. > 50mm  
Valid: 20240506 - 20240512

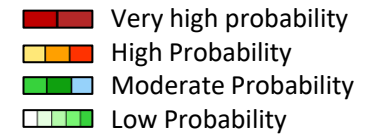


## Probability to Exceed 50mm

- Moderate to high over some parts of CAR;
- Low to moderate over southwestern Mindanao;
- Low over the rest of the country.

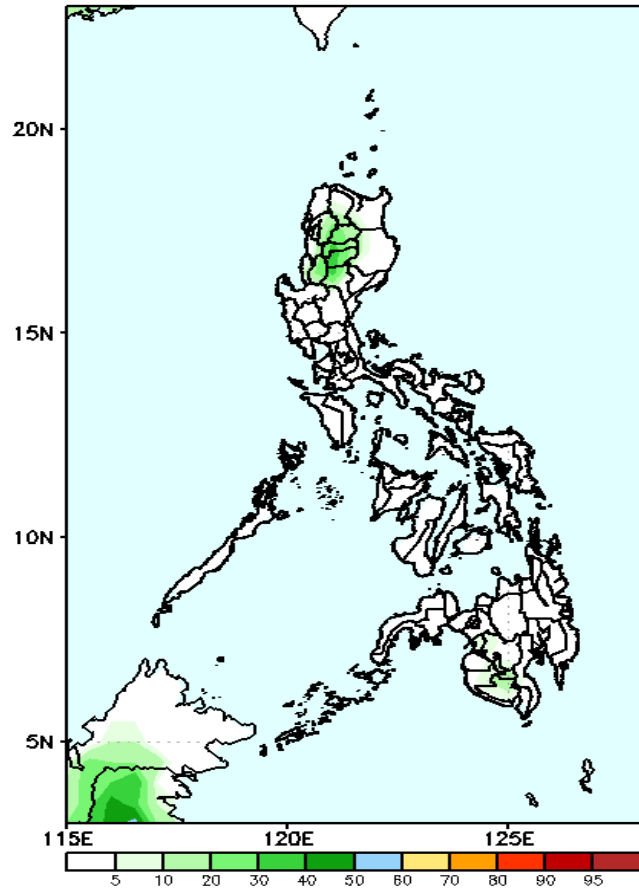


# Exceedance Probability > 100/150/200 mm



## Week 2: May 06-12, 2024

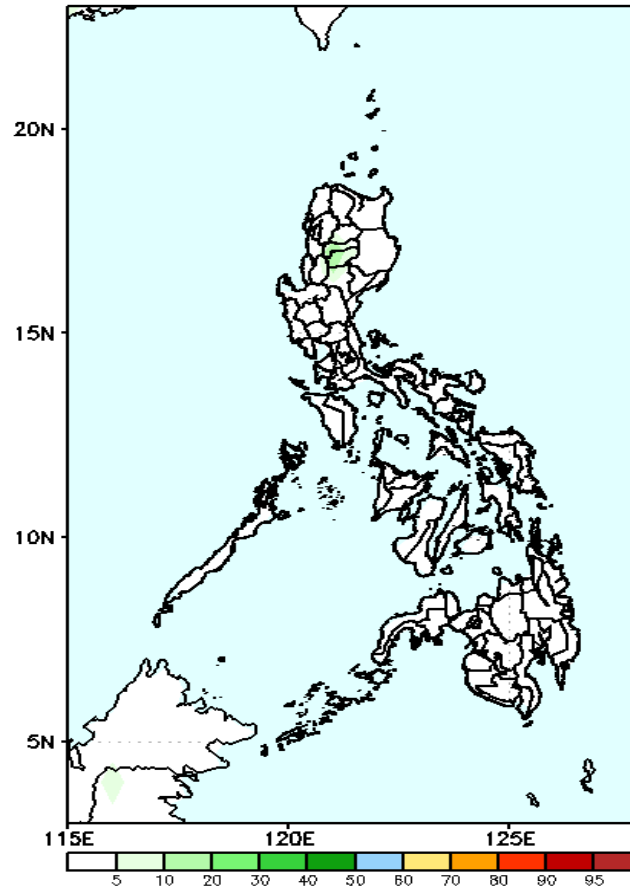
GEFS Week-2 Exceedance Prob. > 100mm  
Valid: 20240506 - 20240512



Probability to Exceed 100mm

- Low across the country.

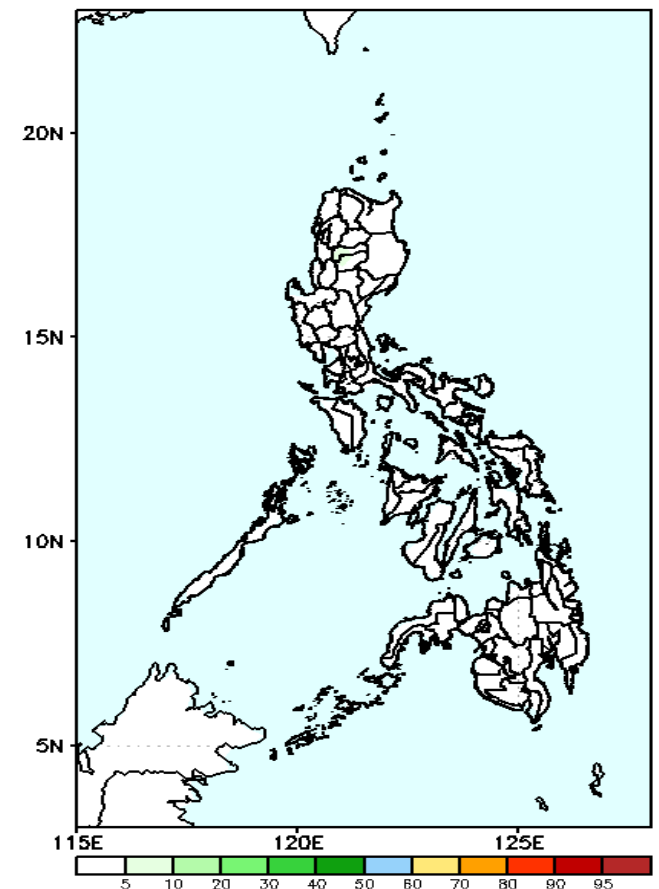
GEFS Week-2 Exceedance Prob. > 150mm  
Valid: 20240506 - 20240512



Probability to Exceed 150mm

- Low across the country.

GEFS Week-2 Exceedance Prob. > 200mm  
Valid: 20240506 - 20240512

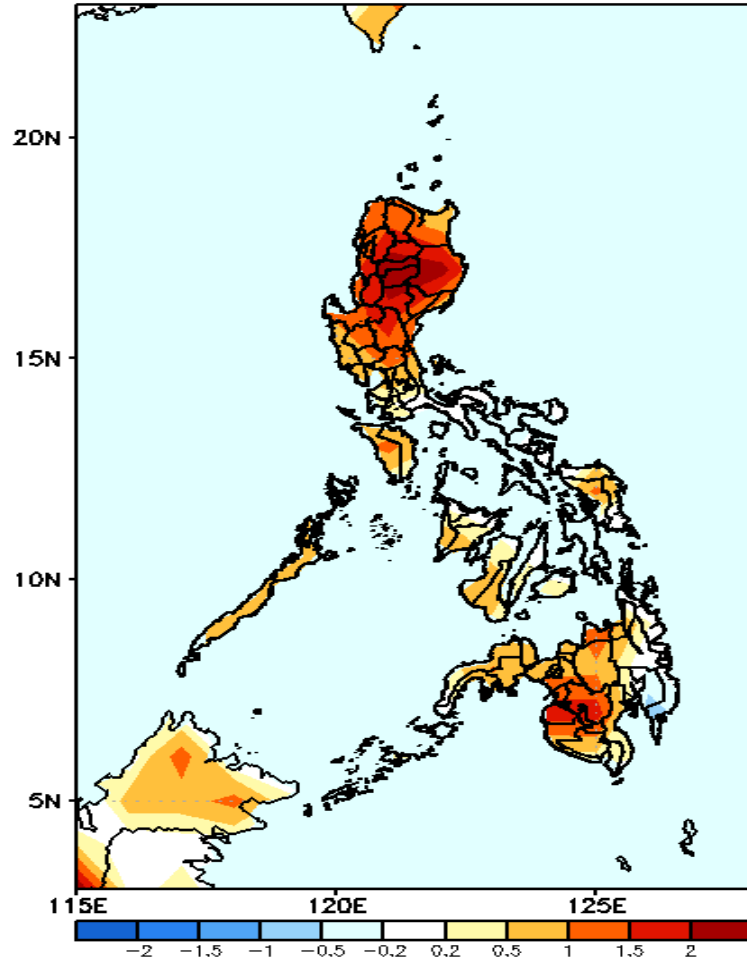


Probability to Exceed 200mm

- Low across the country.

# GEFS Week-1 & 2 Forecasts: T2m Anomaly

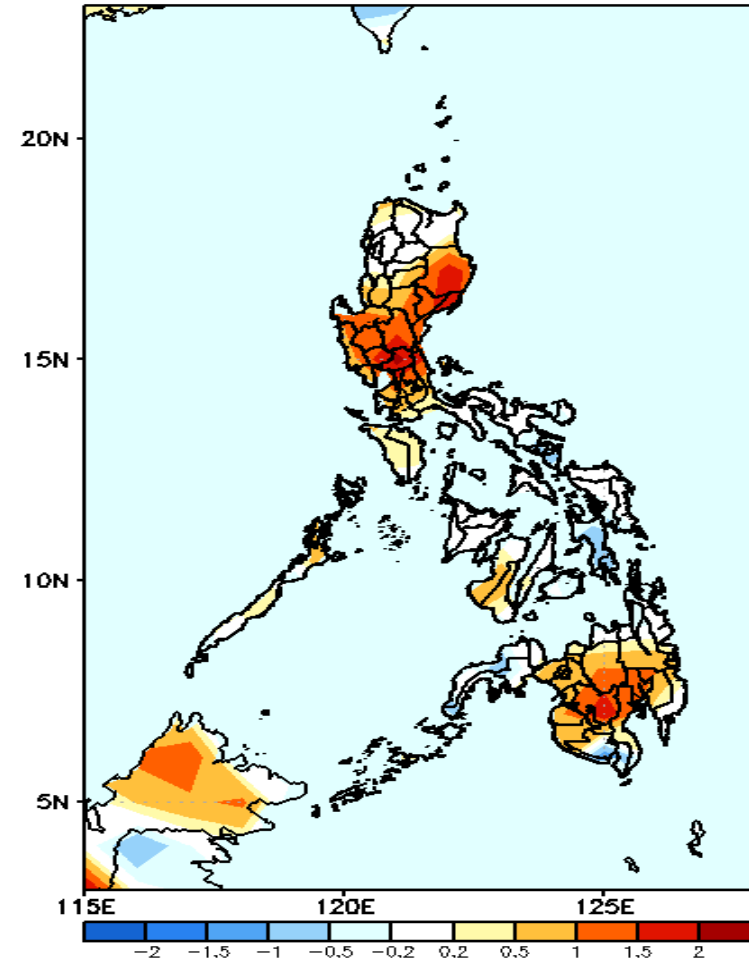
GEFS Week-1 T2m Anomaly  
Valid: 20240429 - 20240505



## 2m Temperature Week 1: April 29- May 05, 2024

Slightly warmer to warmer than average surface air temperature will likely be experienced in most parts of Luzon, Samar provinces, western Visayas and northern and western Mindanao while near average surface air temperature is expected in Bicol Region, the rest of Visayas and eastern Mindanao.

GEFS Week-2 T2m Anomaly  
Valid: 20240506 - 20240512



## 2m Temperature Week 2: May 06-12, 2024

Slightly warmer to warmer than average surface air temperature will likely be experienced in most parts of Luzon and Mindanao while near to slightly cooler than average surface air temperature is expected in extreme northern Luzon, Bicol Region, Zamboanga Peninsula and most parts of Visayas.